

History of the  
Columbia Alumnae Chapter  
(Beta Beta Sigma)

Delta Sigma Theta, Inc.

Columbia, S.C.

1940-1982





### **FORWARD**

Without its history, Delta Sigma Theta Sorority has no roots; the tree cannot endure. Columbia Alumnae's roots are explicitly entrenched in this informative document compiled by the Heritage and Archives Committee.

Special gratitude is extended to the committee who spent countless hours toiling through the records and shaping the data into our Delta monograph. The tree will endure!

Doris G. Greene, President

### **Heritage and Archives Committee**

Mattie W. Jackson  
Jennie Y. McAdams  
Wilhelmina Kershaw  
Gloria McWhirter  
Helen Schumpert  
Harriett Rogers  
Junie Martin  
Jeanette Dozier  
Drucilla Johnson





## Prologue

The tree of Delta Sigma Theta, Inc. has brought forth many branches and much fruit since its inception at Howard University in 1913. One of these off-springs was conceived in 1940 with the birth of the Beta Beta Sigma Chapter in Columbia, South Carolina. Since that time the seed has grown, has been nourished and has brought forth fruit.

The second alumnae chapter established in South Carolina, Beta Beta Sigma was chartered by Minerva Johnson, Southern Regional Director and was composed of fifteen Delta Women who had previously organized a club in preparation for the local chapter. The chapter was a part of the Southern Region.

The National President was Elsie Austin and the chapter participated in its first National Convention in December 1941 in Detroit, Michigan.

In the year of her establishment, Beta Beta Sigma joined other chapters throughout the nation in having as its particular purpose and object: to establish and maintain a high standard of morality and scholarship among women. But as the sorority grew, and as the need for public awareness and service in ever-widening areas grew, Delta has adapted her program to meet the needs of the times.

In 1958 Grand Chapter decided that Graduate Chapters no longer be identified by Greek letters. Beta Beta Sigma became Columbia Alumnae Chapter.

In 1960, the South Atlantic Region was created and Columbia Alumnae Chapter, along with other South Carolina, North Carolina and Virginia Chapters became a part of this region — composed of the largest number of chapters of any other region.

Through the years, the Columbia Alumnae Chapter has joined other chapters in its public service program of educational development, economic development, community and international development, housing and urban development, and mental health.

Special local projects have included Black heritage seminars, career fairs, volunteer services at hospitals and homes for the elderly, and tutorial reading programs.

Since 1962 Columbia Alumnae Chapter has sponsored a Debutante Cotillion every other year. Young ladies of high standards of morality and scholarship are selected to participate. For a period of six to eight months prior to presentation, they are involved in a wide variety of instructional activities and projects designed to prepare them for successful social, educational and occupational participation.

### In a Nutshell:

The Columbia Alumnae Chapter

- was **charted** November 16, 1940
- belongs to the **South Atlantic Region**
- has had **20** presidents
- has had two former members elected Regional Director — Soror Lucia James, Director of the Southern Region: in 1951; Soror Ruby Davis, elected South Atlantic Regional Director in 1977
- has hosted **three Regional Conferences** — Dec. 1-2, 1943; June 6-8, 1968; May 27-30, 1982
- was represented on the **National Housing Committee** in 1968 by Soror Juliette Gilliam.
- was represented on the **National Nominating Committee** in 1972 by Soror Wilhelmina Kershaw
- was represented on the **Regional Nominating Committee** in 1982 by Soror Lillian Martin who served as its chairperson
- was represented in the Pan-Hellenic Council by Soror Doris Greene who served as its president 1969-1971
- was represented in Pan-Hellenic Council by Soror Gloria Boyd who served as vice-president for 1980-81 and was re-elected for the same position for 1981-82.

### THEY LED US THROUGH THE YEARS . . .

Charity Adams	1940 - 1942
Horatio Nelson	1942 - 1944
Hariett S. Rogers	1944 - 1946
Lucia James	1946 - 1949
Eugenia Higgins	1949 - 1950
Jennie Young (McAdams)	1950 - 1952
Mattie W. Jackson	1952 - 1953
Corinne Burton	1953 - 1955
Nettie Chappelle	1955 - 1957
Erline Goff	1957 - 1959
Juliette Gilliam	1959 - 1961
Elsie Harley	1961 - 1963
Margaret S. Walker	1963 - 1965
Evelyn J. Brown	1965 - 1967
Juliette Gilliam	1967 - 1969
Wilhelmina M. Kershaw	1969 - 1971
Rosena Lucas	1971 - 1973
Oretha K. Young	1973 - 1977
Lillian H. Martin	1977 - 1981
Doris G. Greene	1981 -



MAJOR CHARITY EDNA ADAMS  
FIRST PRESIDENT OF BETA BETA SIGMA CHAPTER  
[COLUMBIA ALUMNAE]



CLASS OF SERVICE

This is a full-rate Telegram or Cablegram unless its deferred character is indicated by a suitable symbol above or preceding the address.

A. N. WILLIAMS  
PRESIDENT

WESTERN (08)  
UNION

NEWCOMB CARLTON  
CHAIRMAN OF THE BOARD

J. C. WILLEVER  
FIRST VICE-PRESIDENT

SYMBOLS

DL - Day Letter  
NT - Overnight Telegram  
LC - Deferred Cable  
MT - Cable Message Service  
Day Indication

The time shown in the date line on telegrams and day letters is STANDARD TIME 76.25% of origin. Time of receipt is STANDARD TIME as point of destination.

NA204 50 DL=FTDESMOINES IOWA 16 508P

QW 16 PM 7 10

MRS W T MADDEN=

BETA BETA SIGMA CHAPTER DELTA SIGMA THETA SORORITY

1908 HENDERSON ST COLUMBIA SCAR=

EXTEND TO THE CHAPTER MY FULLEST CONGRATULATIONS AND HAPPINESS  
FOR THE INITIATION AND ESPECIALLY TO THE NEW DELTAS. IT IS A  
LONG HOPED FOR OCCASION AND THE ONLY NOTE OF BORROW IS THAT  
I AM NOT WITH THEM AT THIS TIME. BUT I AM PULLING FOR YOU  
ALL THE WAY=

CHARITY EDNA ADAMS.

1945

THE COMPANY WILL APPRECIATE SUGGESTIONS FROM ITS PATRONS CONCERNING ITS SERVICE

## 1942 - 1944

### OFFICERS:

PRESIDENT	HORATIO NELSON
VICE PRESIDENT	CORINNE BURTON
RECORDING SECRETARY	MINNIE JOHNSON
CORRESPONDING SECRETARY	WILHELMINA MADDEN
TREASURER	MARIAH OUTEN
JOURNALIST	CARRIE LEBOO
SERGEANT-AT-ARMS	VIVIAN MONTEITH
HISTORIAN	HARRIETT ROGERS
CHAPLAIN	RUTH HORRY

National President - Elsie Austin

The community was cognizant of Beta Beta Sigma's existence, due to the impact of the contributions being made educationally. Participation and support for religious and social activities were highly evident. All were in keeping with our National theme.

The annual Founders Day banquet funds were replaced with the use of money going for the purchase of war bonds. During this time Beta Beta Sigma had become affiliated with the USO and Service Club at Fort Jackson. Contributions went toward the equipment for the day room there.

Saturday, May 15, 1943 was highlighted with an entertainment for girls from the local colleges.

Members of the chapter reached their goal with a pledge of \$500.00 toward the Good Samaritan-Waverly Hospital Drive sponsored by Negro Citizens of Columbia.

The great need for war-time working mothers was met when Delta opened a Day Nursery at 700 Blanding Street.

Beta Beta Sigma served as hostess to the Southern Regional Conference held on Dec. 1, and 2, 1943. Twenty-eight chapters participated from five Southern States. Soror Elsie Austin, National Grand President presided at the business meetings. It was at this time that Beta Beta Sigma's "Open House" for the Delta Nursery was held.

A Pin-Up Girl Contest was sponsored, featuring twenty-five young contestants, each vieing for the honor of being Miss Pin-Up. \$978.65 was raised from this activity.

Beta Beta Sigma Chapter was awarded a plaque during the Regional Conference for Outstanding Achievement during the past years. At this gathering the plaque was presented to Soror Nelson for achievement, and scholarship awards went to students of Allen and Benedict Colleges, both of Columbia, South Carolina.



1944 - 1946

**OFFICERS:**

PRESIDENT	HARRIETT S. ROGERS
VICE PRESIDENT	MARIAN PAUL
CORRESPONDING SECRETARY	RUTH EVERETT
RECORDING SECRETARY	MARIAN THOMPSON
ASSISTANT SECRETARY	MARY L. GARRICK
TREASURER	EVARETTA S. RUTHERFORD
SERGEANT-AT-ARMS	GERALDINE DECOSTA
CHAPLAIN	ERLINE GOFF
PARLIAMENTARIAN	WILLA DIXON
HISTORIAN	WILHELMINA MADDEN

National President - Mae Wright Peck

The chapter membership included twenty-six sorors and nine affiliated sorors. Delta's Three Point Program to promote General Welfare, Education and Health was initiated.

Activities for the year focused on a voter campaign in cooperation with the Progressive Democratic Party. Each soror pledged to personally transport at least ten (10) adults to the polls to register and vote.

Program topics for monthly meetings included (1) The Negro in Drama, (2) The Negro in Politics, (3) The Importance of Modern Foreign Language; and (4) What's Wrong with our Education System.

Soror Elsie Austin, Past Grand President, was presented as speaker by the chapter in a public program at Allen University, March 31, 1946. Her address was entitled "Peace Begins at Home."

Fund raising activities were the Jabberwock, dedicated to returning World War II servicemen, and a Pin-up Girls contest, featuring twenty-five lovely young ladies who vied for the title of Miss Pin-up Girl. Proceeds from both of these projects were used for scholarships.

President Harriett Rogers was the chapter's delegate to the National Convention which met in Richmond, Va. during the Christmas Holidays.

## 1946 - 1948

## 1948 - 1949

### OFFICERS:

PRESIDENT	LUCIA JAMES	LUCIA JAMES*
VICE PRESIDENT	MINNIE JOHNSON	MINNIE JOHNSON
RECORDING SECRETARY	WILLA MARTIN	EVELYN BROWN
CORRESPONDING SECRETARY	FRANCES VANCE	MATTIE WARD
FINANCIAL SECRETARY	DOROTHY RUSSELL	DOROTHY RUSSELL
TREASURER	EVARETTA RUTHERFORD	ERLINE GOFF
PARLIAMENTARIAN	VIVIAN MONTEITH	ANNETTE PETERSON
JOURNALIST	EVARETTA RUTHERFORD	EVARETTA RUTHERFORD
SGT-AT-ARMS	JULIETTE GILLIAM	JULIETTE GILLIAM

National President - Dorothy Height

Membership in the chapter rose to 39 active sorors with 6 associate members. In order to inform the public of its purpose and programmed activities, a radio program was presented over station WIS in Columbia.

The local project, under the direction of the Education Committee, was a library project. The chapter purchased a variety of books designed for elementary school children and set up a Reading Room and Story Hour at the Bethlehem Community Center. The story hour was held weekly, with sorors introducing children to classics and other reading material not available in their homes. The youngsters who participated in the program were entertained at an Easter egg hunt, and were taken on tours of the city and college libraries.

In health services, the chapter donated one thousand dollars to the Good-Samaritan-Waverley Hospital, where we helped to furnish one of the children's rooms.

Involvement in the NAACP's registration and voter drive was an important civic thrust.

In appreciation to the brave mothers of our servicemen, the chapter honored them at a Mother's Day Tea, May 8, 1948. Each mother was presented a letter of appreciation and a corsage.

The Jabberwock was the fund-raising drive to support the scholarship fund.

The chapter engaged in a campaign for the distribution of the Negro Hero Magazine in recognition of National Hero Day. Sales were promoted through introduction of the project to classes in the public schools.

\*Soror James resigned in January to do graduate study. Soror Higgins acted until Soror Minnie Johnson, vice-president, returned from illness.

**OFFICERS:**

PRESIDENT	EUGENIA HIGGINS
VICE PRESIDENT	MINNIE JOHNSON
RECORDING SECRETARY	EVELYN BROWN
CORRESPONDING SECRETARY	MATTIE WARD
FINANCIAL SECRETARY	MARGARET LEWIE
TREASURER	ERLINE GOFF
SERGEANT-AT-ARMS	JULIETTE GILLIAM
CHAPLAIN	NETTIE CHAPPELLE
PARLIAMENTARIAN	VIVIAN MONTEITH

National President Dorothy Height

The library project became the focal point of emphasis in our educational thrust. The efforts were concentrated on pre-schoolers in order to provide a variety of reading and language experiences for reading readiness. The committee canvassed a number of neighborhoods and agencies to solicit appropriate reading materials for pre-schoolers. Story hours were held weekly and a limited amount of time was given to teaching the language arts skills of listening and speaking.

A Valentine Day party was given for the children who attended the story hours.

Because of a high incidence of tuberculosis among Blacks in the city and outlying areas, financial contributions were given to the Ridgewood Tuberculosis Camp in the rural area of Richland county.

The annual Jabberwock was presented with funds donated to the tuberculosis camp, to the local Urban League and to scholarships.

Beta Beta Sigma joined with other Greek letter organizations in sponsoring **Carolina Jamboree**, a project to aid the Good Samaritan Waverley Hospital Drive.

Founders Day was observed with a public program at Allen University. Mrs. Daisy Lampkin, honorary member of Delta Sigma Theta was the speaker. Soror Clemmie Webber, Regional Director introduced Soror Lampkin.



## 1950 - 1952

### OFFICERS:

PRESIDENT	JENNIE YOUNG (McADAMS)
VICE PRESIDENT	EVELYN BROWN
RECORDING SECRETARY	ROBBIE ATKINSON
CORRESPONDING SECRETARY	VIVIAN CALHOUN
FINANCIAL SECRETARY	MARGARET WALKER
SERGEANT-AT-ARMS	JULIETTE GILLIAM
JOURNALIST	EVARETTA RUTHERFORD
TREASURER	ERLINE GOFF
PARLIAMENTARIAN	HORATIO NELSON
CHAPLAIN	NETTIE CHAPPELLE

National President - Dorothy Height

Delta was the first fraternal group to support publically and vigorously the Tuberculosis Bond Drive in Richland County. At this time, Soror Young, gave a radio broadcast in support of said Drive.

Our Grand President, Soror Height, was our guest speaker during our 1951 Founders Day Observance.

The chapter sponsored a Halloween party for children of the Richland County Cripple Society.

In order to foster a closer working relationship with other fraternal groups in the city, the chapter entertained the officers of all Greek letter organizations at a Sunday Afternoon Tea.



## 1952 - 1953

### OFFICERS:

PRESIDENT	MATTIE JACKSON
VICE PRESIDENT	FRANCES VANCE
RECORDING SECRETARY	CAROLYN TREZEVANT
CORRESPONDING SECRETARY	WILHELMINA G. BLAKELEY
FINANCIAL SECRETARY	MARGARET WALKER
TREASURER	JULIETTE GILLIAM
CHAPLAIN	CORA O'NEIL
SERGEANT-AT-ARMS	MARY JONES
REPORTER	WILHELMINA MADDEN

National President - Dorothy Height

Students at C. A. Johnson and Booker T. Washington High Schools were presented pamphlets, which described a variety of occupations and career opportunities. The chapter worked closely with school counselors in bringing to the students representatives of the various vocations, who described the job opportunities and the preparations needed for each.

Soror Reber S. Cann, Grand Secretary was our Founders Day Speaker. She shared the afternoon of January 13, 1952 with sorors at Allen University. Her subject was "Human Rights Off of Paper Into Practice."

The Eighth Jabberwock was held at Allen University, April 10, 1953. The theme was "A Musical Voyage." The Jabberwock was designed to encourage the development of amateur talent and to offer to the public an unusual form of entertainment. The Jabberwock enabled the chapter to finance various educational endeavors such as scholarships, prizes and loans, library development, citizenship training projects, and other civic and cultural programs.

The South Carolina Leadership Meeting with Gamma Pi, Gamma Upsilon and Beta Beta Sigma Chapters as hostesses was held Saturday, February 16. The fifty-three sorors present represented all South Carolina and Savannah Chapters.

## 1953 - 1955

### OFFICERS:

PRESIDENT	CORINNE BURTON
VICE PRESIDENT	ERLINE GOFF
RECORDING SECRETARY	CAROLYN TREZEVANT
FINANCIAL SECRETARY	MARGARET WALKER
CORRESPONDING SECRETARY	FRANCES VANCE
TREASURER	JULIETTE GILLIAM

National President - Dorothy Height

In recognition of finer womanhood, the chapter honored mothers of the community in a public program.

**1955 - 1957**

**OFFICERS:**

PRESIDENT	NETTIE CHAPPELLE
National President - Dorothy Height, 1955 - 1956	
Dorothy Harrison, 1957	

---

Increased emphasis was on Mental Health. The Chapter gave educational materials and learning devices to the Pineland State Training School.

**1957 - 1959**

**OFFICERS:**

PRESIDENT	ERLINE GOFF
TREASURER	JULIETTE GILLIAM
National President - Dorothy Harrison, 1957	
Jeanne Noble, 1958 - 1959	

An adopted family was the center of our efforts which included counseling, food and clothing and recreational activities.

In 1958, Soror Sylvia P. Swinton was chosen "Teacher of the Year."

1959 – 1961

**OFFICERS:**

PRESIDENT	JULIETTE GILIAM
VICE PRESIDEN	THOMASENA TRAPP
CORRESPONDING SECRETARY	IRESSA PETERSON
RECORDING SECRETARY	MARGARET WALKER
FINANCIAL SECRETARY	GERTRUDE MITCHELL
TREASURER	ERLINE GOFF
PARLIAMENTARIAN	BARBARA THOMPSON
JOURNALIST	SYLVIA SWINTON
CUSTODIAN	EMMALIE JENKINS
CHAPLAIN	LAVERNE SWEAT
SARGEANT-AT-ARMS	HALLISTENE GREENE

National President – Jeann Noble

The Columbia Alumnae Chapter recognizing the need for academic, cultural, and social preparedness in the youth of today, sponsored twenty-three young ladies as cotillionettes, in its first Cotillion held on April 21, 1961 at the Columbia Township Auditorium.

The cotillionettes calendar of activities started early in the year with Clinic Workshops held on Saturday afternoons from 2:00 p.m. until 4:00 p.m. The cotillionettes were invited to informal teas, parties and drop-ins.

Soror Gwendolyn W. Henderson was General Chairperson of the Cotillion committee.

During Soror Gilliam's term as president the chapter came to the forefort again with the Ebony Fashion Fair, a much talked about performance.

1961 – 1963

OFFICERS:

PRESIDENT	ELSIE HARLEY
VICE PRESIDENT	EVARETTA RUTHERFORD
SECRETARY	THOMASINA TRAPP
ASSISTANT SECRETARY	MAURICE HARRISON
TREASURER	WILHELMINA BLAKELY
CHAPLAIN	GILLIAM
CUSTODIAN	NETTIE CHAPPELLE
UNDERGRADUATE ADVISOR	ERLINE GOFF
DEAN OF PLEDGEES	WILHELMINA MADDEN JULIETTE

National President – Geraldine P. Woods

A city-wide Art Exhibit was held at the W. A. Perry School. Junior high school and senior high school students entered works in oil, water-color, tempera, ceramics, wood and sculpture. Works were judged by art instructors from local colleges and schools.

The Founders Day speaker was Jimmie Buggs Middleton, one of Delta's Founders. This program was in observance of our fiftieth anniversary.

Soror Sylvia Poole Swinton earned the Doctorate Degree. She was also among special students who were presented honor and recognition certificates for high scholastic achievement.

Soror Evaretta S. Rutherford was awarded the Doctorate Degree from Harvard University, Cambridge, Mass. June 1962. While at Harvard, she was elected to membership in the Pi Lambda Theta Sorority, an honor society for women in education.



1963 - 1965

OFFICERS:

PRESIDENT	MARGARET WALKER
VICE PRESIDENT	IRESSA PETERSON
CORRESPONDING SECRETARY	WILHELMINA KERSHAW
RECORDING SECRETARY	THOMASENA DRUMMOND
FINANCIAL SECRETARY	GLORIA SCHUMPERT
TREASURER	WILHELMINA BLAKELY
JOURNALIST	MATTIE JACKSON
PARLIAMENTARIAN	SYLVIA SWINTON
CUSTODIAN	NETTIE SWINTON
SERGEANT-AT-ARMS	LILLIAN ADDERLEY
CHAPLAIN	RUBY DAVIS

National President - Geraldine P. Woods

President John F. Kennedy saluted the sorority in the Golden Anniversary Celebration in Washington, D. C. at the Founders Day Celebration, January 12 - 13, 1963.

The Allen University Alumni Club of New York City presented a Distinguished Service Award to Dr. Sylvia P. Swinton on October 26, 1963.

The sorority presented a Spring Hobby Festival on May 10, 1964 at W. A. Perry Junior High School.

During the Christmas season the chapter provided gifts for the women incarcerated in the Correction Institute.

## 1965 - 1967

### OFFICERS:

PRESIDENT	EVELYN BROWN
VICE PRESIDENT	MARGARET WALKER
RECORDING SECRETARY	RUBY T. DAVIS
	MARLENE MCCLERKLIN
CORRESPONDING SECRETARY	WILHELMINA KERSHAW
FINANCIAL SECRETARY	GLORIA JAMES
SERGEANT-AT-ARMS	MARLENE MCCLERKLIN
	JULIETTE GILLIAM
PARLIAMENTARIAN	CORINNE BURTON
CHAPLAIN	MARIAN THOMPSON
CUSTODIAN	ERLINE GOFF
	HERTICENE HARRISON
JOURNALIST	LILLIAN BOYD
	LILLIAN MARTIN
TREASURER	DELORES FRAZIER

National President - Geraldine P. Woods

In the area of mental health the chapter entertained and gave gifts to the patients at Crafts-Farrow Hospital.

Since one of the thrusts of the chapter is to render meaningful services for the improvement of human life through community and international involvement, a Christmas Seal Bond was purchased. The chapter also became a life member of the National Council of Negro Women.

During the May Week celebration a program was given to salute Greek mothers. Delta's mother was Soror Dorothy Russell, mother of Soror Vivian R. Martin.

State Senator Verdie Welcome of Maryland and a Delta was the featured speaker during the Founders Day celebration, January 15, 1966. Soror Welcome spoke during the Sunday morning church service at Second Calvary Baptist Church.

A Colony chapter was established at the University of South Carolina (T.I.D.). The Dean of Women suggested that the sorority petition the Pan-Hellenic Council to establish a Delta chapter there.

A medical instrument was purchased by the chapter for Soror Sarah Prioleau, first black female medical student at the Medical College at Charleston, S. C.

1967 - 1969

**OFFICERS:**

PRESIDENT	JULIETTE GILLIAM
VICE PRESIDENT	CORINNE BURTON
RECORDING SECRETARY	BARBARA CLARKSON
CORRESPONDING SECRETARY	HELEN SCHUMPERT
FINANCIAL SECRETARY	MARY WILLINGHAM
TREASURER	GLORIA JAMES
CHAPLAIN	GERTRUDE SANDERS
PARLIAMENTARIAN	MARIAN THOMPSON
SERGEANT-AT-ARMS	MILDRED SATTLEWHITE
JOURNALIST	LILLIAN MARTIN
CUSTODIAN	JEANNETTE OUTEN

Grand Chapter President - Frankie M. Freeman

The chapter put a great deal of emphasis on community needs: a tuberculosis bond was purchased, \$100 was contributed to the Urban League, monetary gifts were given to Good Samaritan-Waverley Hospital and to Benedict College and Allen University during their fund raising drives.

Many projects devoted to mental health were undertaken by the chapter. One of these projects concerned entertaining the patients in Ward 14 (Men's ward) at Crafts-Farrow Hospital.

Cancer pads were made and given to a needy patient in Columbia Hospital.

The chapter had a television set repaired for the senior citizens at Oak-Read Apartments.

A letter was sent to the chairman of the textbook commission requesting that the state adopt multi-ethnic textbooks.

The Social Action Committee sent correspondence asking the federal government to intervene in the case of Dorothy Young, a 14 year old Black girl who would possibly be imprisoned "for using strong language" toward a 14 year old white boy who had been abusing her.

Many sorors volunteered their services at St. Luke Center. This committee also sponsored a study program at the Camp Farnace area. Many sorors tutored children.

The South Atlantic Regional was held here under the supervision of Soror Edythe Tweedy, Regional Director. The place was the Wade Hampton Hotel, June 6 - 8, 1968. The theme was "Delta Women Confront the Future — Youth and Its Potential." The honored guest speaker was Mr. Roy Littlejohn, Executive Director of the Model Inner City Community Organization of Washington, D. C. Workshops and seminars were planned on leadership skills. A model initiation was held on Friday. Laura Thompson and Patricia Ford of Columbia, S. C. were initiated.

Soror Gilliam served on the National Housing Committee in 1968.



1969 - 1971

**OFFICERS:**

PRESIDENT	WILHELMINA KERSHAW
VICE PRESIDENT	MARY JOHNSON
RECORDING SECRETARY	BARBARA WESTON
CORRESPONDING SECRETARY	DORIS GREENE
FINANCIAL SECRETARY	MARLENE MCCLERKLIN
TREASURER	MARY WILLINGHAM
HISTORIAN	LOTTIE EVANS
REPORTER	ROSENA LUCAS
PARLIAMENTARIAN	LILLIAN ADDERLEY
SERGEANT-AT-ARMS	CLARA MATTHEWS
CHAPLAIN	ELIZABETH BELL
CUSTODIAN	JULIETTE GILLIAM

National President - Frankie M. Freeman

One of the most vehement and persistent demands of high school and college students was that Black History and Culture be taught on a vastly expanded scale. The Columbia Alumnae Chapter heard these cries and answered the call through a Black Awareness Series which explored the history, the arts, the music, the drama, the literature and the dance of the Black Man. The presentations took the form of seminars, work-shops, study-groups, and concerts beginning in November of 1969 and culminating in a public program entitled **Black Voices in Poetry and Drama** as our May Week Observance.

The community involvement project of the year which gave chapter members most satisfaction was the initiation and operation of the Central City Thrift Shop. Designed to assist underprivileged families of the Waverley Community, the shop provided clothing, books, toys and household articles at prices commensurate with the incomes of the people it served. Customers came to purchase not to receive charity! This gave them the independence and the pride so badly needed among those of low incomes.

The Thrift Shop provided part-time employment for one needy and deserving adult of the community. Undergraduate Sorors from the local chapters assisted the sponsoring chapter in renovating the building, in soliciting items for sale and in preparing and distributing flyers for advertisement purposes.

In order to be further involved in helping the needy, the chapter "adopted" two rural families - each with single parents with five children ranging in ages from 2 to 10. In addition to providing the physical necessities of food and clothing, all members of both families received personal guidance and training to enhance their emotional, educational, and recreational well-being.

The fund-raising project of the year was the Annual Cotillion presented during the Christmas Holidays. Proceeds were used for two 4 year scholarships to the two all-Black high schools.

At the 1970 Regional Conference held in Wilmington, N. C. chapter president Soror Wilhelmina Kershaw was elected to serve on the National Nominating Committee for the 1972 National Convention held in Atlanta, Ga.



## 1971 - 1973

### OFFICERS:

PRESIDENT	ROSENA LUCAS
VICE PRESIDENT	ELIZABETH BELL
RECORDING SECRETARY	BARBARA WESTON
CORRESPONDING SECRETARY	GLORIA JAMES
FINANCIAL SECRETARY	MARLENE MCCLERKLIN
TREASURER	MARY WILLINGHAM
SERGEANT-AT-ARMS	ERNESTINE MARTIN
CHAPLIAN	GERTRUDE SANDERS
CUSTODIAN	JULIETTE GILLIAM
REPORTER	ELSIE HARRIS
HISTORIAN	ETHEL CLARKSON

National President - Lillian P. Benbow

Founders Day 1972 guest speaker was Soror Gloria Randle Scott, Grand National Secretary, Delta Sigma Theta Sorority, Inc. She spoke at Ladson United Presbyterian Church.

On February 17, 1973, a banquet was held at Capstone on the campus of the University of South Carolina, honoring Iota Chi. Seventeen young women were initiated into Delta Sigma Theta and became Charter members of Iota Chi undergraduate chapter on the University of South Carolina Campus. Delta Sigma Theta was the first Black Sorority on the University of South Carolina campus.

May Week 1973, was celebrated by holding a garage sale at Oak-Read Apartments and St. John Baptist Church. All proceeds of the sale went toward the Delta's Teen-Lift Project. The Teens were taken on an all-expense paid trip to Carowinds. Delta Teens were made up of forty black youngsters from disadvantaged situations.

Another community involvement project was furnishing uniforms and other scouting materials to one of the local girl scout troops.

"Music Unlimited," a variety program, featured guest soloists and choirs from the Columbia area. It was held at the Northminster United Presbyterian Church.

Soror Lucas was the chapter's delegate to the National Convention in Houston, Texas and the Regional Conference that convened in Wilmington, N. C., June, 1972.

**OFFICERS:**

PRESIDENT	ORETHA K. YOUNG	ORETHA K. YOUNG
FIRST VICE PRESIDENT	BARBARA WESTON	LOTTIE EVANS
SECOND VICE PRESIDENT	PARTICIA GOLD	FRANCENA WILLINGHAM
CORRESPONDING SECRETARY	MARGARET NAUDIN	ANNABELLE WALKER
RECORDING SECRETARY	LYDIA SANDIFORD	CLARA MATTHEWS
FINANCIAL SECRETARY	CORRINE SMITH	MOZELLA WHITE
TREASURER	MARY WILLINGHAM	HELEN C. SCHUMPERT
SERGEANT-AT-ARMS	DRUCILLA JOHNSON	LULEE GRANDY
CUSTODIAN	JULIETTE GILLIAM	GERTRUDE SANDERS
REPORTER	CAROLYN KIMBLE	LINDA REESE
ALTERNATE REPORTER	ANN BETHEL	
PARLIAMENTARIAN	WILHELMINA KERSHAW	MARY JOHNSON

National President - Lillian P. Benbow

The Columbia Alumnae Chapter, worked under a grant from its National office\* to sponsor a Health Careers Information Project. The purpose of the project was to make the public aware of the availability of health careers for young people. The Health Careers Fair was held on March 24 from 4 to 6 p.m. at St. Luke's Center, 2211 Lady Street. Representatives from twenty health professions disseminated information on job opportunities, training, and scholarships available in the health field.

Delta Teen-Lift participants took a trip to Charleston, South Carolina. They toured Charles Town Landing, Fort Sumter and Gonzales Gardens.

The Columbia Alumnae Chapter presented the Women's Correctional Institute with gift boxes for newly incarcerated women. The gift boxes, contained items for dental and body hygiene. They were distributed by officials to women who arrived at the prison without money to purchase personal necessities.

The Cotillion for 1974 had for its theme, "A Salute to Black Women." Forty-seven young women of college and high school age made their formal bows to society. James Clyburn, South Carolina Human Affairs Commissioner, was the guest master of ceremonies.

the 1976 Founders Day guest speaker was Dr. Ruby Davis, a former member of The Columbia Alumnae Chapter.

Mayor John T. Campbell, signed a Proclamation honoring May Week celebration of 1976. The Columbia Alumnae Chapter celebrated a bicentennial observance which encompassed three aspects of this Nation's History: Heritage, Horizons and Festival. The observance was held during the Sorority's annual May Week. The theme of May Week was "May Week 1976 - A Bicentennial Observance."

As its Heritage project, the chapter donated to all area high schools and colleges copies of Delta Telecommunications Album "Roses and Revolutions." "Roses and Revolutions," spans in song and poetry the Black Man's history from the time of his arrival on American soil to the present.

As its Horizons project, the Sorority sponsored a premier showing of the Delta Film "Countdown as Kustino," Friday May 7 at 8 p.m. at the Palmetto Theatre. The proceeds from the premier benefitted the Respite House and the restoration of the Simons-Mann Cottage, a Richland County Bicentennial Heritage project.



1977 - 1979

**OFFICERS:**

PRESIDENT	LILLIAN MARTIN
FIRST VICE PRESIDENT	DORIS GREENE
SECOND VICE PRESIDENT	LYDIA SANDIFORD
RECORDING SECRETARY	WILLEAN BONNER
CORRESPONDING SECRETARY	LURENA COCHRAN
TREASURER	JANELLE WILLIAMS
FINANCIAL SECRETARY	PRISCILLA NEWTON
CUSTODIAN	JULIETTE GILLIAM
JOURNALIST	MATTIE JACKSON
CHAPLAIN	MARY WILLIAMS
SERGEANT-AT-ARMS	THELMA BAILEY
PARLIAMENTARIAN	CAROLYN TAYLOR

National President - Thelma T. Daley

The Debutante Cotillion of 1978 featured 33 young ladies. The theme for the presentation was "Achieving Womanhood Through Aspiration and Action."

In order to expose the unemployed and under-employed, the chapter sponsored a Career Opportunity Day at Eau Claire High School. Thirty consultants from businesses, agencies and schools discussed their occupations and disseminated information of how to pursue and secure jobs.

In Arts and Letters, the chapter presented Soror Linda L. Kershaw in concert April 23, 1978. Soror Kershaw, daughter of Soror Wilhelmina Keshaw, is an instructor of music of the Performing Arts School of the Philadelphia College of Performing Arts, instructor of piano at Settlement Music School and the Thomas Eakins Cultural Center of Philadelphia.

Tommy Scott Young, Director of Kitani Foundation, an arts organization, was honored at an Autograph Party in February, 1978.

The thirty-eighth Founders Day program was held January 14, 1978 with Soror Ruby T. Davis, South Atlantic Regional Director, as guest speaker.

As a part of May Week celebration, and in conjunction with Senior Citizens Week, the chapter presented the Rockaway Revue, a group of 40 dynamic senior citizens from Jamaica, N. Y. in "Sounds of Music." They have entertained audiences of all ages across the United States and received enthusiastic reviews from their television performances. Their program of music and dance is rendered with unbelievable skill and appeals to all ages and all tastes.

The program was presented to the public free of charge. Senior citizens from high rise apartments and a group from the state hospital were transported to the program.

The Teen Lift project involved 30 special education students from the W. A. Perry Middle School. They were taken to the Alvin Ailey Dance Concert at the Township Auditorium.

Soror President, Lillian Martin represented the chapter at the National Convention in Denver, Colorado in August, 1977.

Again the chapter sponsored Careers Night at Eau Claire High School. Adults of the community, as well as high school students, participated in the seminars and demonstrations presented by the consultants representing varied occupations and vocations.

Recognizing the emphasis on children during the International Year of the Child observation, the chapter presented a camera to a young lady who travelled with a group of teenagers to India. Upon her return she shared a slide presentation with sorors and a group of her peers.

Founders Day was observed at Benedict College where an Internal Development Seminar was held. Sessions of 45 minutes each focused on the following areas: Parliamentary Procedure, Delta's Five-Point Program, Pan Hellenic Concerns, Undergraduate Affairs.

Again Deltas presented the Rockaway Revue in May. In addition to this program designed primarily for senior citizens, bingo parties were held each Monday night for residents of the Oak-Read High Rise Apartments.

This year the chapter completed its \$1,000 pledge to the Distinguished Professor Chair.



## 1979 - 1981

### OFFICERS:

PRESIDENT	LILLIAN MARTIN
FIRST VICE PRESIDENT	DORIS GREENE
SECOND VICE PRESIDENT	LYDIA SANDIFORD
RECORDING SECRETARY	WILLEAN BONNER
CORRESPONDING SECRETARY	CICELY JOHNSON
FINANCIAL SECRETARY	ROSA ROSS
TREASURER	LURENA COCHRAN
PARLIAMENTARIAN	CAROLYN TAYLOR
JOURNALIST	ARTHUREE RICKS
CHAPLAIN	DORIS BENSON
SERGEANT-AT-ARMS	THELMA BAILEY
CUSTODIAN	JULIETTE GILLIAM

National President - Thelma Daley; Mona Bailey

The chapter began its year with the undertaking of an exciting project - the purchase of a Delta House located at 2308 Haskell Avenue.

Soror Lillian Martin, having been elected to a second two-year term as president, attended the National Convention held in New Orleans, La., August, 1979.

In arts and Letters, the chapter presented the play "Sizwe Banzi is Dead" at the Little Theater at A. C. Flora High School on April 24, 1980.

The Fortieth Founders Day observance was held at the Greenview Elementary School, January 19, 1979. The theme "Through the Looking Glass" featured two of the chapters first neophytes - Sorors Junie Martin and Wilhelmina Madden, and ten of the former presidents. Each was presented an engraved plaque.

The Rockaway Revue was presented for the third consecutive year. Senior citizens were again entertained with a series of bingo parties.

The Cotillion was held December 23, 1980. Thirty-nine young ladies were presented. The theme for the occasion was "A Symphony of Beauty."

In June, 1980 the Columbia Alumnae Chapter was well represented at the Regional Conference held in Charlotte, N. C. The chapter was chosen as the hostess for the 1982 Regional Conference. Soror Lillian Martin was elected chairman of the Regional nominating committee.

In January 1981, the first meeting was held in the Delta House.

A Literacy Training Workshop was the Founders Day activity in January, 1981. Eighty-three persons were trained in the Lauback method of reading instruction. Afterwards the chapter was certified by the Literacy Council to teach and tutor illiterates to read.

To get funds for repairing and maintaining the Delta House, two fund-raising projects were held - a card party entitled "Saturday Shuffle" earned more than three hundred dollars. A gasoline raffle was held with proceeds going to the housing fund.

Our community involvement consisted of working with new inmates at the Central Corrections Institute. Personal items were provided each new inmate, and visits by sorors were made on a regular basis.

The year ended with a Reclamation Spring Dance for sorors. Each active soror sponsored an inactive Delta by purchasing a ticket for her and escorting her to the dance.

## OFFICERS:

PRESIDENT  
 FIRST VICE PRESIDENT  
 SECOND VICE PRESIDENT  
 RECORDING SECRETARY  
 CORRESPONDING SECRETARY  
 FINANCIAL SECRETARY  
 TREASURER  
 PARLIAMENTARIAN  
 CUSTODIAN  
 CHAPLAIN  
 SERGEANT-AT-ARMS  
 PAST PRESIDENT

DORIS GREENE  
 ELIZABETH BELL  
 GLORIA BOYD  
 VIVIAN NELSON  
 MARGARET WALKER  
 MARGARET NAUDIN  
 ROSALYN WAGES  
 CAROLYN TAYLOR  
 HELEN CANNON  
 BETTY CUNNINGHAM  
 GLORIA SCOTT  
 LILLIAN MARTIN

National President - Mona Bailey

The chapter entered a biennium with the keynote to a systematic approach for internal operation being "management by objectives." Chapter goals and objectives for 1981 - 83 were determined. The Executive Board met during the summer to facilitate a smooth transition between administrations.

## HERITAGE AND ARCHIVES

To preserve the history of the Columbia Alumnae Chapter for ourselves and our posterity through a written document and the establishment of a Delta Library.

To appoint a historian who will chair Heritage and Archives Committee

## II. DELTA HOUSE

To structure and enact a financial support system which insures an adequate monthly operating income for the Delta House.

To revise constitution to be more in keeping with policies and procedures of the Columbia Alumnae Chapter

To begin utilization of the house as a Community Development Center by April, 1982.

To secure grant for implementation of public service project.

To initiate one major fundraising activity to occur on alternating years of the Cotillion; to begin major fundraiser in the fall of 1981

## III. FIVE-POINT PROGRAM

To adopt the South Carolina Reading Campaign as our main service project for the 1981-83 Biennium

To certify 85% of Delta membership as literacy tutors by 1983

To assist other Delta chapters in the state in promoting the campaign

To give recognition to the "Life Project" in Atlanta, Georgia

To keep membership informed monthly of meaningful activities which involve critical local, state and national political and social issues which impact on the lives of minorities

To promote active involvement in programs, movements, etc. which influence our lives

## IV. COTILLION

To establish a Board of Governors which would give continuous leadership to the operation, policies, and procedures of the Cotillion

To develop a Manual of Operations for the Cotillion

## V. RECLAMATION

To actively reclaim 20% of sorors no longer affiliated with the chapter

## VI. REGIONAL/NATIONAL INVOLVEMENT

To host The South Atlantic Regional Conference in Columbia, May 27 - 30, 1981

To promote from within our ranks sorors as candidates for regional and national officers and/or committees

## VII. CHAPTER MANAGEMENT

To implement management by objectives for internal operations

To involve all financial members in actively serving on at least one Delta committee

To collect all local dues by deadline stated in Constitution

## VIII. SCHOLARSHIP AND STANDARDS

To increase the amount awarded in scholarships by May, 1983

To seek and identify resources to assist with supplying youth and women with scholarship information

## IX. PUBLICITY

To increase public awareness of Delta activity by designing a publicity program

To provide membership with a newsletter printed biannually



In June the chapter was presented an award by the office of Adult Education, State Department of Education, in recognition of participation and leadership given to the S. C. Adult Reading Campaign.

In July, officers of the second Delta House Board of Directors were named with Carolyn Taylor as chairperson, Doris Benson, Secretary and Rosena Lucas, treasurer.

Regional Director Norma Sermon appointed Lillian Martin and Rosena Lucas to serve as coordinators of the South Atlantic Regional Conference. To assist were undergraduate presidents Demetris Davis (Iota Chi), Joan McClain (Gamma Upsilon) and Dorothy Wilson (Gamma Pi).

The president, Soror Greene, and sergeant-at-arms Soror Gloria Scott were the delegates and alternate delegate respectively to the National Convention held in Washington, D. C., August 1 - 5, 1981. Also attending were Gloria Boyd, Liz Bell, Helen Schumpert, Doris Benson, Sterlin Benson, Miriam Fanuiel, Valeria Rowe Jackson, Vivian Nelson, Margaret Naudin, Loretta Moon, Janice McMillan, Rosena Lucas, Connie Lucas, Hazel Harkness, Virginia Cofield, Ophelia Green, Emmalee Jenkins, Janelle Williams, Lillian Martin, Marlene McClerklin, Betty Cunningham, Carolyn Taylor and Margaret Dixon.

The highlight of the convention was the impressive "March on Washington." THE DELTA, summer issue reports: "Ten thousand white-clad members of Delta Sigma Theta Sorority, Inc. marched six abreast down Pennsylvania Avenue to the steps of the U. S. Capitol on the opening day of the 36th National Convention, August 1, 1981, to offer prayers to the nation in an ecumenical service." Founders Winona C. Alexander, 89, of Jacksonville, Florida, and Bertha P. Campbell, of Seattle, Washington, joined sorors at the moving service. According to reports, this was the largest national convention ever.

To prepare for the year's program, standing committee chairpersons were appointed: Social Action - Marlene McClerklin; Projects - Clara Mathews; Scholarship and Standards - Liz Bell; Arts and Letters - Lydia Sandiford; Constitution and Bylaws - Sylvia Watson; Membership/Reclamation - Gloria Boyd; Delta Cotillion - Oretha Young and Margaret Walker.

Other chairpersons included: Courtesy - Juliette Gilliam; Adult Reading Campaign - Margaret Dixon; Founders Day - Jenny Screen; Deltettes - Betty Cunningham; May Week - Giselle White; Teen Lift - Queenie Green; Golden Life - Rosa Ross; Scrapbook - Rosie Mickle; Publicity/Newsletter - Arthuree Ricks.

More than 80 sorors were in attendance at the first monthly meeting. Each completed a Delta Inventory card for the purpose of committee assignments. Sorors submitted correspondence to the Social Action Committee in which they voiced their support of the extension of the Voting Rights Act. Letters were in turn mailed to Washington.

In observance of Literacy Month, Margaret Dixon discussed Delta's involvement in the Adult Reading Campaign on "Monday Night Switchboard," radio station WOIC. Doris Greene appeared on "Open Line," Channel 35.

The Projects Committee assisted with the fund-raising drive for the Mann Simons Cottage, sponsored by The Links, Inc. A donation of one hundred dollars was designated for the cottage.

The Delta House Finance Committee presented "The Team Concept" with the members of the executive board from the chapter serving as team leaders whose duty it was to reach every Delta in the Columbia area, encouraging them to contribute to the purchase of the house. Twenty-two teams, each bearing the name of a Founder, were formed. A magazine subscription campaign was a major fundraising project from which one thousand dollars was returned to the subscribers in the community. Soror Lucas chaired the Finance Committee and Betty J. Cunningham the Fund Raising Committee.

As monthly attendance increased, it became necessary to move the meeting place to larger accommodations. The Arrington Manor, a high-rise complex for senior and handicapped citizens was chosen and provided the opportunity for the chapter to learn to problems and needs of the elderly. This association developed and from it the residents became our "adoptees" for community activities. The Membership/Reclamation Committee (Gloria Boyd, Chr.) coordinated a Christmas party with the singing of carols and the presentation of gifts to each resident.

The chapter made a donation to "The Haitian Refugee Christmas Party." The funds were used to purchase food and clothing for the refugees.

To observe the chapter's forty-second anniversary and the nation's sixty-ninth, more than one hundred sorors gathered at the Quality Inn, February 27, 1982. Harriett Rogers, one of the charter members spoke to "Reflections and Rededication - Lest We Forget," the program theme. The first Delta House Awards were presented to Juliette Gilliam, Dorothy Russell, Ester Witherspoon, Janelle Williams and Helen Cannon. Twenty-five year certificates went to Margaret Walker, Nettie Swinton and Betty J. Cunningham. Immediate past president Lillian Martin received the President's Award, a replica of those awarded former local presidents in 1980.

Special guests attending the Founders Day Program were president of the other Greek letter organizations and Pan-Hellenic Council members. The weekend observance was climaxed with worship service at Bishops Memorial AME Church.

Preparation for the Cotillion began in March with the official name given to the ball the Delta Assembly.

In April, books and magazines were collected by the Reading Campaign Committee and donated to the Special Olympics Reading Tent sponsored by Richland #1 Adult/Community Education Program.

The Puboicity Committee published the first edition of THE DELTA DISPATCH. Arthuree Ricks and Sara Harris, co-chairpersons. Assisting them was Dianne Daniels, USC journalism student, who completed her internship in public relations with the chapter. Her practicum included the development of a publicity campaign packet for the Regional Conference and May Week activities.



## SUMMARY OF CHAPTER'S PROGRAMMATIC THRUSTS

### I. EDUCATIONAL DEVELOPMENT

- A. Youth Library Services - Story Hour and Reading Readiness
- B. Black Heritage Seminars
- C. Scholarship Program
- D. Training Programs for Cultural and Social Enrichment
  - 1. Cotillions
  - 2. Teen Lifts
- E. Career Day
- F. Adoption of South Carolina Adult Reading Campaign

### II. ECONOMIC DEVELOPMENT

- A. Health Fairs
- B. Nutrition and Diet Planning
- C. Thrift Shop

### III. COMMUNITY AND INTERNATIONAL INVOLVEMENT

- A. Senior Citizens' Activities
  - 1. Rockaway Revue
  - 2. Bingo Parties
- B. Political Awardness
  - 1. Petition to Congressmen - Extension of Voting Rights Act
  - 2. Voter registration
  - 3. Transportation to polls
- C. Volunteer Services - Social and Welfare agencies
  - 1. Women's Correctional Institute, State Mental Hospital, Ridgewood Tuberculosis Camp, Good Samaritan-Waverley Hospital, Day Care Center

### IV. Arts and Letters

- A. Art exhibitions
- B. Concerts
- C. Rockaway Revue
- D. Countdown at Kusini
- E. Sizwe Banzi Is Dead (two-man drama)
- F. Autograph Parties



### **EPILOGUE . . .**

From twenty members in 1940 to 119 members in 1982, the seeds of scholarship, public service and social welfare have been nurtured by optimism, faith, skill and perseverance, and today, the Columbia Alumnae Chapter looks to the future - confident that her efforts to enlighten, enoble and uplift humanity will spread and grow.

May, 1982

COLUMBIA ALUMNAE CHAPTER  
HOSTESS TO 1982 REGIONAL CONFERENCE  
May 27 - 28



## ROSTER

Doris Adams  
Lillian Adderley  
Doretta Anderson  
Mable Ashe  
Thelma Bailey  
Dr. Liz. Bell  
Doris Benson  
Ann Bethel  
Willow Blocker  
Geralean Boaz  
Willean Bonner  
Gloria Boyd  
Margaret Boulware  
Willie Brooks  
Beryl Burton  
Corine Burton  
Della Cauley  
Helen Cannon  
Lurena Cochran  
Virginia Coefield  
Bettye B. Cunningham  
Octavia Dixon  
Valerie Doughty  
Jeannette Dozier  
Conchita Edens  
Cynthia Edney  
Georgia Elam  
Lottie Evans  
Miriam Fanuiel  
Gloria Ferguson  
Deloris Frazier  
Maritha Frederick  
Juliette Gilliam  
Bettye Glymph  
Lulee Grady  
Queenie Green  
Doris Greene  
Ophelia Green  
Yvonne Hall  
Juliet Hare

Hazel Harkness  
Sarah Harris  
Etta Harrison  
Alice Hurley  
Cheryl Jackson  
Mattie Jackson  
Valerie Rowe Jackson  
Emmalee Jenkins  
Cecily Johnson  
Druscilla Johnson  
Minnie Johnson  
Marie Jones  
Wilhelmina Kennedy  
Wilhelmina Kershaw  
Nettie Dean Lark  
Adessa Lewis  
Sheila Littlejohn  
Laverne Lorick  
Rosena Lucas  
Wilhelmina Madden  
Janie A. Martin  
Lillian Martin  
Willa Martin  
Clara Mathews  
Jenny McAdams  
Marlene McClerklin  
Margie McCullers  
Sharona McKee  
Donna McKie  
Gloria McWhirter  
Rosie Mickle  
Loretta Moon  
Priscilla Murrell  
Andretta Nance  
Margaret Naudin  
Vivian Nelson  
Priscilla Newton  
Elease Parker  
Corrie Patterson  
Eunice Ponder

Lorene Poole  
Veronica Ramseur  
Irene Reid  
Linda Reese  
Arthuree Ricks  
Bernadette Rogers  
Rosa Ross  
Dorothy Russell  
Virginia Samuel  
Gertrude Sanders  
Lydia Sandiford  
Parthenia Satterwhite  
Helen Schumpert  
Gloria Scott  
Jenny Screen  
Corrine Smith  
Lutherine Smith  
Doris Spain  
Reavelle Stephenson  
Vera Steplight  
Nettie Swinton  
Carolyn Taylor  
Ethel Taylor  
Rosalyn V. Thomas  
Rosilyn Wages  
Annabelle Walker  
Margaret Walker  
Sylvia Watson  
Mozelle White  
Giselle White  
Sarah White  
Emma D. Williams  
Mattie Williams  
Janelle Williams  
Mary W. Williams  
Mary Willingham  
Ester Witherspoon  
Theopia Witherspoon  
Oretha Young



# MEETING THE NEEDS OF THE COMMUNITY - COLUMBIA ALUMNAE CHAPTER OPERATES THRIFT SHOP

## The State WOMEN

1-D Columbia, S. C., Thursday, Feb. 12, 1970



By LAURIE PRICE  
Staff Writer

We always tend to ignore those problems that are right under our noses.

It was the recognition of this fact that prompted the Columbia Alumnae Chapter of Delta Sigma Theta sorority to appoint a community involvement committee last September. "Our goal," explained Mrs. Cecil L. Adderly, chairman of the committee, "was to become really involved in our own community problems and find ways of giving aid to those who need it."

After pondering many suggestions, the group finally decided on two projects that they believed would benefit the greatest number of people. "It was suggested," recalled Mrs. Herbert Kershaw, president of the chapter, "that we should help the underprivileged in a way that would allow those who do not want to accept 'gifts' to pay their own way in proportion to their income."

### TWO PROJECTS

With this in mind, the chapter members began plans for the Central City Thrift Shop, a store that would offer clothing, books, toys and various household articles at prices commensurate with relatively low incomes. In addition, as a second project, the group adopted two families in the Columbia area and has been providing them with various necessities since last September.

It is the thrift shop, though, that reaches the greatest number of people, and although it has only been operating since last week, the members report great success already.

"We were able to rent a small building that housed a

dental office at 2208 Lady St.," said Mrs. Kershaw, "and it was really in terrible shape. It had been empty for some time and it was a real undertaking to get it in decent shape again."

"Many of the husbands of chapter members helped us with the necessary carpentry," added Mrs. James Lucas, a member of the committee, "and they repaired and replaced the plumbing for us. We even had one of the walls knocked out so that the room would be larger."

### 'BRIGHT, CHEERFUL'

The members, with the help of high school students, did all the painting and the rooms reflect many, many hours of work. Bright, cheerful curtains decorate the windows, and an old but faithful heater keeps the

place cozy during the winter months.

"The money that we receive from the sale of the items," said Mrs. Adderly, "goes for rent and utilities for the building. If there should be any left over, we plan to use it to hire part-time help and also to purchase things for our adopted families."

Although the store had its grand opening on Saturday and is only open each Saturday at this time, the chapter hopes to have it in operation on an almost daily basis in the future. "When we can afford to hire some people part-time," explained Mrs. Kershaw, "we plan to give the jobs to those who need them, so we'll be helping people in that way too."

"It's actually a project to help people help themselves," she went on. "If we are able to supply clothing and a few other necessities at low prices, then there will be more money left for them to spend on other things."



SOUTHERN REGIONAL CONFERENCE, COLUMBIA, S. C., DECEMBER 1-2, 1944





CITY OF COLUMBIA  
SOUTH CAROLINA

JOHN T. CAMPBELL  
MAYOR

PROCLAMATION

WHEREAS, the Columbia Alumnae Chapter of Delta Sigma Theta Sorority, Inc. has devoted innumerable hours of volunteer service to the betterment of the Columbia community; and

WHEREAS, Columbia Deltas have for 36 years developed and maintained significantly outstanding service programs in the areas of social action, mental health, health careers, heritage, and arts and letters; and

WHEREAS, hundreds of youths have been assisted in their quest for post secondary education by Delta Sigma Theta Sorority; and

WHEREAS, Delta women are committed to the uplift of disadvantaged teens and of women in prison; and

WHEREAS, in this Bicentennial Year the Columbia Community will be enriched culturally by the Delta May Week Celebration and the Delta talent abounding;

NOW, THEREFORE, I, John T. Campbell, Mayor of the City of Columbia, South Carolina, do hereby proclaim the week of May 2-8, 1976, as

DELTA MAY WEEK

in the City of Columbia and ask that all citizens become more aware of this dedicated group of Delta women who dare to break new ground in their public service programs.

Given under my hand and the Great Seal of the City of Columbia on this 27th day of April, Anno Domini, 1976, and in the two-hundredth year of our American Independence.



*John T. Campbell*  
JOHN T. CAMPBELL  
Mayor

MAYOR JOHN T. CAMPBELL SIGNS PROCLAMATION AS  
SOROR LORETHA YOUNG LOOKS ON



## PRESENTATION OF THE RECORDING "ROSES AND REVOLUTIONS"

The Chapter presented each of the seven area high schools with the recording **Roses and Revolutions**. The presentations were made by Soror Lillian Martin, Chapter President.



C. A. Johnson High



Columbia High

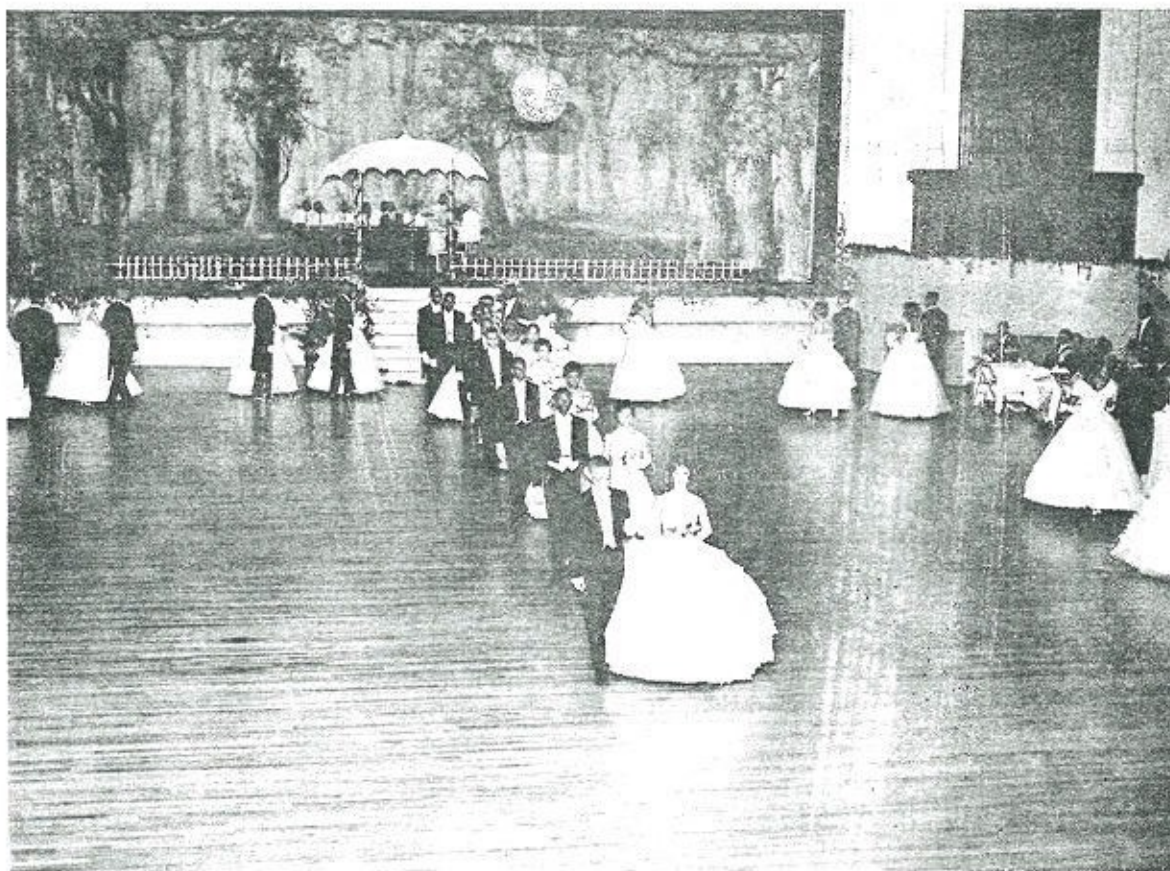


Dreher High



Keenan High

APRIL 21, 1961 — 1st ANNUAL COTILLION  
PRESENTED BY THE COLUMBIA ALUMNAE CHAPTER



## STORY HOUR AND READINESS PROGRAM

### BETHLEHEM COMMUNITY CENTER

Soror Lucia James, Chapter president reads a story to these eager youngsters.

